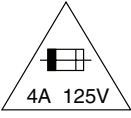


Power Supply CBA Top View

**CAUTION !**  
Fixed voltage (or Auto voltage selectable) power supply circuit is used in this unit.  
If Main Fuse (F601) is blown , check to see that all components in the power supply circuit are not defective before you connect the AC plug to the AC power supply.  
Otherwise it may cause some components in the power supply circuit to fail.



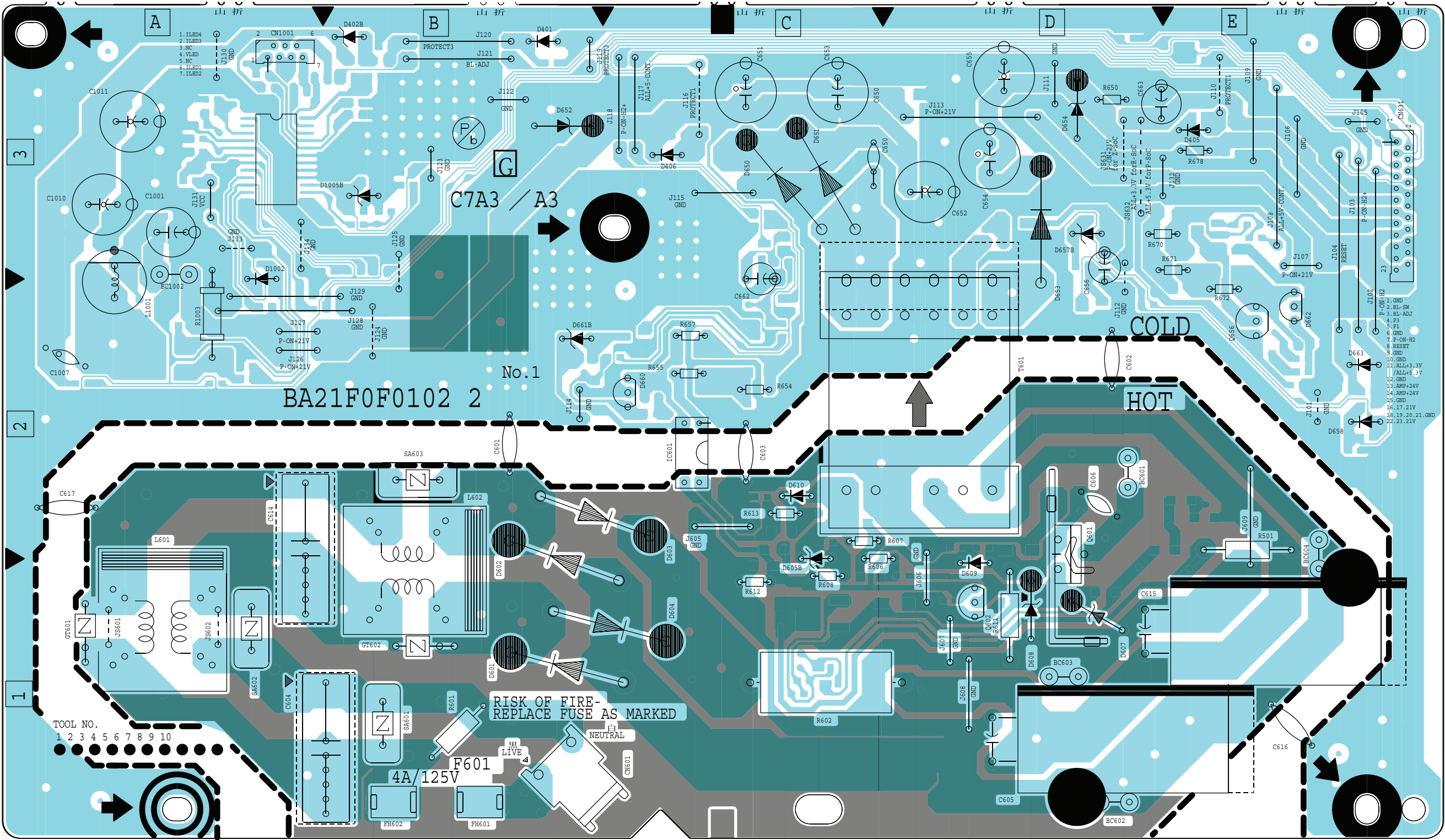
4A 125V

**CAUTION ! :** For continued protection against risk of fire,  
replace only with same type 4A, 125V fuse.

**ATTENTION :** Utiliser un fusible de rechange de même type de 4A, 125V.

Because a hot chassis ground is present in the power supply circuit, an isolation transformer must be used when repairing.  
Also, in order to have the ability to increase the input slowly, when troubleshooting this type of power supply circuit, a variable isolation transformer is required.

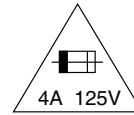
**NOTE:**  
The voltage for parts in hot circuit is measured using hot GND as a common terminal.



### Power Supply CBA Bottom View

**CAUTION !**

Fixed voltage (or Auto voltage selectable) power supply circuit is used in this unit. If Main Fuse (F601) is blown, check to see that all components in the power supply circuit are not defective before you connect the AC plug to the AC power supply. Otherwise it may cause some components in the power supply circuit to fail.



**CAUTION ! :** For continued protection against risk of fire,  
replace only with same type 4A, 125V fuse.

**ATTENTION :** Utiliser un fusible de rechange de même type de 4A, 125V.

Because a hot chassis ground is present in the power supply circuit, an isolation transformer must be used when repairing. Also, in order to have the ability to increase the input slowly, when troubleshooting this type of power supply circuit, a variable isolation transformer is required.

**NOTE:**

The voltage for parts in hot circuit is measured using hot GND as a common terminal.

